



# GMT MONTHLY MEMBERSHIP PROGRESS REPORT

Results as of: 6/30/2017

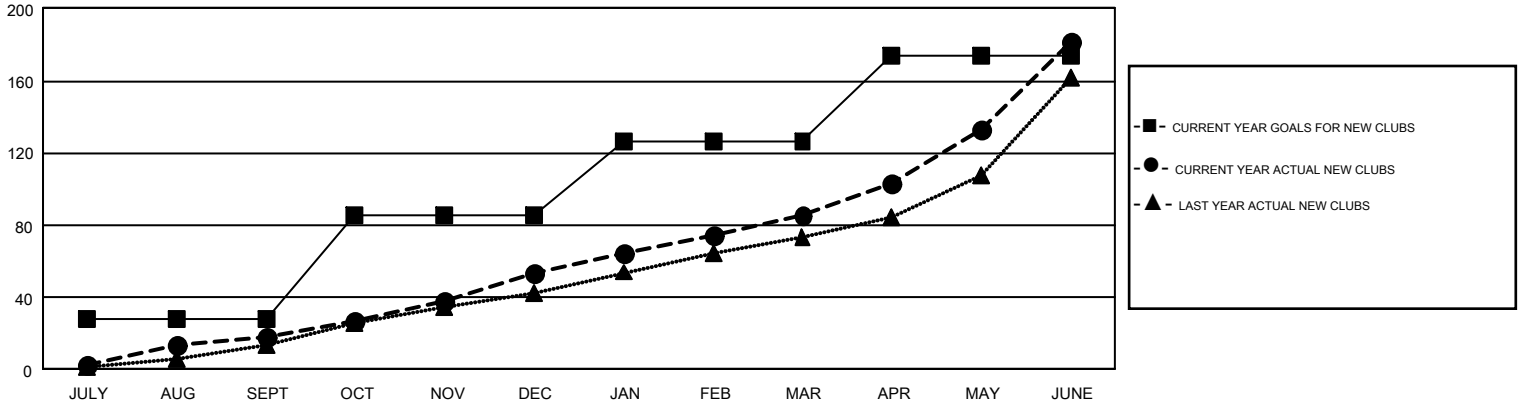
## GMT Constitutional Area 3

REPORT DOES NOT INCLUDE CLUBS IN UNDISTRICTED AREAS.

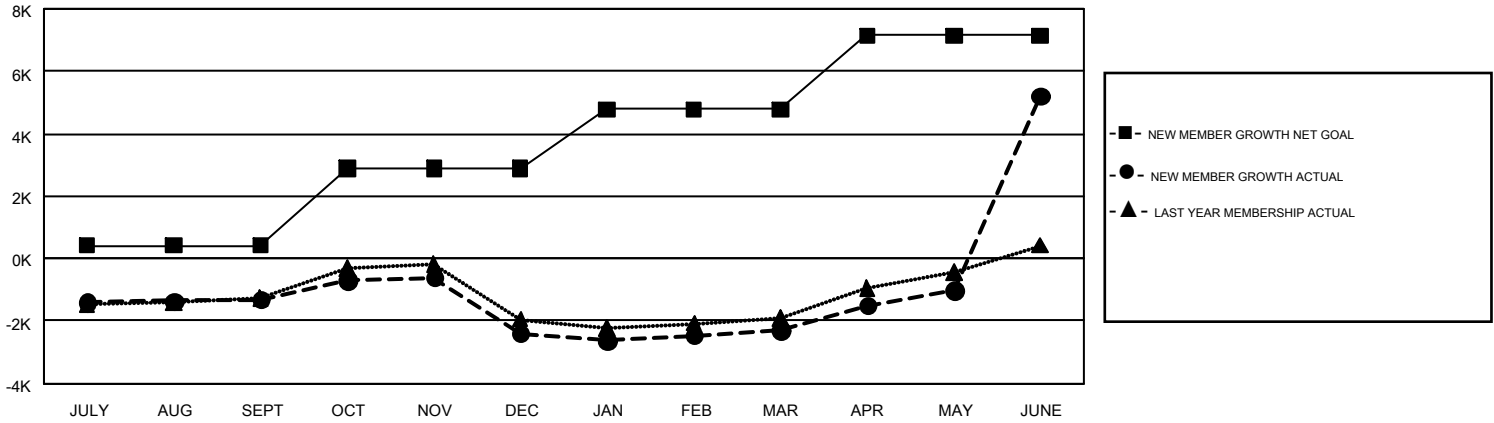
Clubs			
RESULTS FOR 2016-2017			
QUARTER	NEW CLUB GOAL	NEW CLUBS	DROPPED CLUBS
JULY/AUG/SEPT	28	18	24
OCT/NOV/DEC	57	35	69
JAN/FEB/MAR	41	32	15
APR/MAY/JUNE	48	97	59

Members			
RESULTS FOR 2016-2017			
QUARTER	NEW MEMBER GROWTH NET GOAL (not reinstated or transfers)	NEW MEMBER GROWTH ACTUAL (not reinstated or transfers)	DROPPED MEMBERS ACTUAL (including transfers)
JULY/AUG/SEPT	413	3,098	4,404
OCT/NOV/DEC	2,478	3,748	4,830
JAN/FEB/MAR	1,883	2,681	2,577
APR/MAY/JUNE	2,366	13,151	5,659

GOALS AND ACTUAL NEW CLUBS CUMULATIVE



GOALS AND ACTUAL MEMBERS CUMULATIVE



DROPPED CLUBS: 166	3,045 CLUBS OF 4,169 ADDED 1 OR MORE NEW MEMBERS	<b>GENDER DISTRIBUTION</b> MALE 56,542 (52.71%) FEMALE 50,737 (47.29%)
<b>DROPPED MEMBERS</b> DECEASED 873 CLUB CANCELLED 2,192 OTHER 14,403 <b>TOTAL 17,468</b>	<a href="#">CLICK HERE FOR CUMULATIVE MEMBERSHIP DATA</a>	TOTAL FAMILY UNIT MEMBERS 37,275 FAMILY MEMBERS PAYING HALF DUES 20,492